



#WI3325 Lodi - Hwy 60

Address:
W12148 State Hwy 60
Lodi, WI 53555

Site Information:

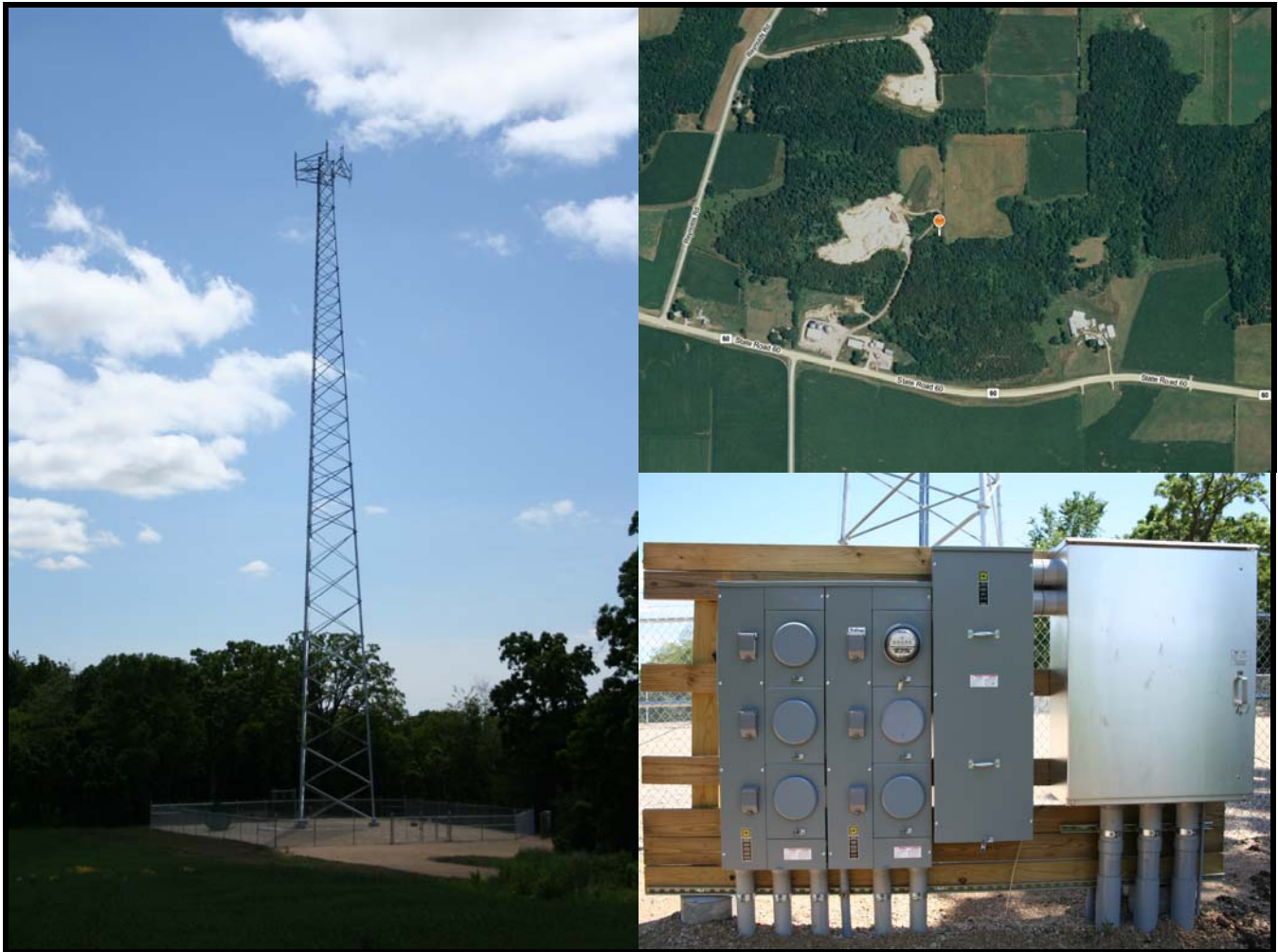
- Site ID: WI3325
- Site Name: Lodi - Hwy 60
- State: WI
- County: Columbia
- Tower Type: Self-Support
- Tower model: Sabre S3TL Series HD1
- Height: 195 feet (extendible to 225 feet)
- Ground Elevation: 1098.1 feet
- Latitude: 43°-18'-18.22", (43.305061111)
- Longitude: 89°-36'-02.70", (-89.600749999)
- FCC Reg #: 1264514

Site Description:

Tower site is built on a ridge top with open access to State Hwy 60. Adequate compound space exists for multiple tenants. Power, Telco and Fiber Optic services have all been extended to the site and are ready for use. Currently one tenant on tower at 195 foot level. Tower is designed to be extendible to 225 feet.

[Location Map](#)

[Co-Location Application Form](#)



Contact Andy Bradley at
608-644-1449 or 608-219-8492
with questions about this site and/or lease options.